



## Portwell Engineering Toolkit Utility Quick Start Manual

### v0.2

- Introduction

This Manual provide the system requirement and quick start step of Portwell Engineering Toolkit (PET) Utility. PET Utility is a demo of PET API. User can find more detail in Portwell Engineering Toolkit Document.

PET supported OS: Windows 7, Windows 10, Ubuntu 18.04 and later, CentOS 7 and later.

PET\_Utility path:

Windows PET\_Utility: PET\_Utility\ Windows\ PET\_Utility.exe

Linux PET\_Utility: PET\_Utility\ Linux\ PET\_Utility\_x64

- PET\_Utility supported function:

System Info: Board Name, Bios verison, EC verison, PET API version.

Hardware Monitor: Temperature, Voltage, and Fan speed.

GPIO: Read and set GPIO pin status (if board has this function).

SMBus: PCH SMBus control (if board has this function).

Watch Dog: Set, trigger, and stop watch dog timer on EC/Super IO.

- Run PET\_Utility on Windows

Library Requirement: **Microsoft Visual C++ Redistributable packages for Visual Studio 2015, 2017, 2019, and 2022.**

You can find more information about this package on Microsoft website:

<https://docs.microsoft.com/en-us/cpp/windows/latest-supported-vc-redist?view=msvc-170>.

Package download Link:

[https://aka.ms/vs/17/release/vc\\_redist.x86.exe](https://aka.ms/vs/17/release/vc_redist.x86.exe)



## Execution Step:

1. Download and Install Required Library.
  2. Unzip <yyyymmdd>\_Unified\_PET\_<x.y.z>.zip\*
  3. Go to "<yyyymmdd>\_Unified\_PET\_<x.y.z>\PET\_Utility\Windows\" folder
  4. Right click PET\_Utility.exe and then click "Run as Administrator." (Fig-1)
- \*. <yyyymmdd>\_Unified\_PET\_<x.y.z> is the filename of PET release. eg. 20240308\_Unified\_PET\_4.7.11

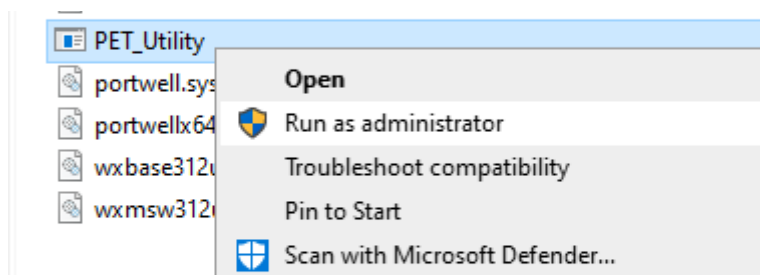


Fig-1 Right Click PET\_Utility and then click "Run as Administrator"

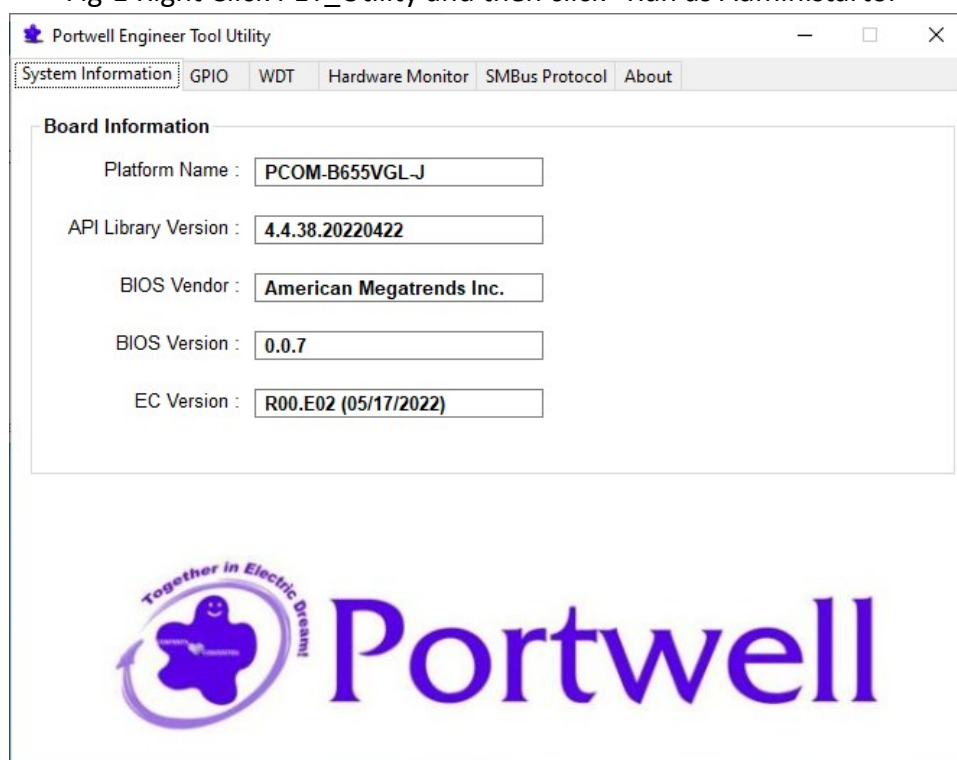


Fig-2 Run PET\_Utility on windows

- Run PET\_Utility on Linux



PET\_Utility must be run under X window. Run Terminal application under X windows and use following command to run PET\_Utility.

```
$ unzip 20220422_Unified_PET_4.4.38.zip  
$ cd 20220422_Unified_PET_4.4.38/PET_API/PET_Utility/Linux  
$ chmod +x PET_Utility_x64  
$ sudo ./PET_Utility_x64
```



Fig-3 Run PET\_Utility on Linux